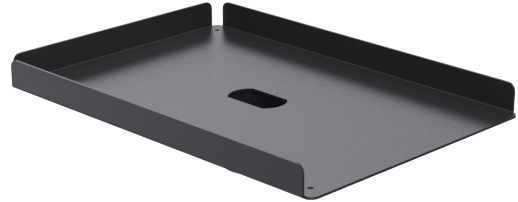


Epson TM-U220 Printer Plate, straight angle

Printer plate with a straight angle, compatible with Ithaca 1500 and Epson TM-220/230 printers (174x251.5mm).



Features:

- Designed to support Epson TM-U220 Printer.
- Internal dimensions: W146xD185mm
- 5-year warranty

Specifications

Warranty	5 Years
Unit per box	1
Net Unit weight (kg)	0.75
Gross Unit weight - box 1 (kg)	0.79
Colour Type	Structured
HS code	8473308000
Main Material	Metal

Product Dimensions

Unit Depth (mm):	251.5
Unit Height (mm):	57.8
Unit Width (mm):	177

Package Dimensions

Package Depth (mm):	270
Package Height (mm):	185
Package Width (mm):	67